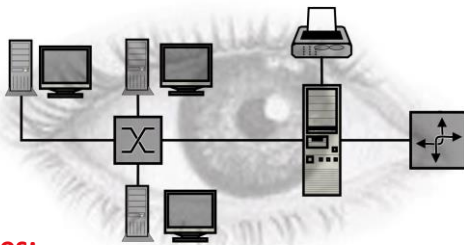




## PRTG-Training

The PRTG monitoring solution enables all-round network insights in real time. Our two-day action oriented training teaches you the complete know-how step by step. Both first-time and experienced users benefit from our course.

## PRTG – Identify network issues before they become critical



### Courses:

#### BASIC (day 1)

##### Installation and configuration

- Basic architecture
- Licensing and system requirements
- Installation and activation
- User interface, desktop, and mobile app
- User administration
- Device tree, remote probes, auto discover, templates

##### Administration

- Data management and network configuration

##### Probes

- Probe types
- Limits and triggers
- SensorDetection features
- Priorities, favorites, tags, dependencies
- Bandwidth monitoring
- Custom sensors: SNMP and libraries

##### Notifications

- Notification types and methods
- Escalation mechanisms and timelines
- Best practices
- Ticket system

##### Data visualization

- Libraries
- Reporting
- Maps and individual dashboards

**We offer the following training options:**  
On-Site at your office, at our Frankfurt training centre, live video.

#### ADVANCED (day 2)

##### Architecture and sensor strategies

- Sensor strategies
  - Architecture strategies
  - Optimization and load balancing
- ##### Expanded sensor technology
- Advanced custom sensors
  - HTTP sensors
  - Bandwidth monitoring (xFlow, Packet Sniffing)
  - SNMP trap, Syslog
  - Virtualization (VMware, Hyper-V, Citrix XenServer, AWS Cloud Services)
  - E-Mail server, databases, backup, QoS/VoIP, Iot/MQTT

##### User-specific adjustments and API

- Data import (sensors, scripts)
- Data export (notifications, trigger, HTTP)
- PRTG API

##### PRTG clustering failover

##### PRTG system status und troubleshooting

- Performance
- Health status
- Logging and troubleshooting
- Additional resources for PRTG

##### Paessler AG alliance and technologies

##### Partnerships

##### Certification

